

# HUGE

# CAD | CAM

Dental CAD/CAM Materials

# CATALOG



Follow us on Facebook

## Shandong Huge Dental Material Corporation

Add / No. 68 Shanhai Road, Donggang District, Rizhao City, Shandong Province,  
276800, P.R. China

Tel / +86 (633) 2277268    marketing@hugedental.com  
www.hugedental.com

[Facebook](#) Huge Dental

[Twitter](#) Huge Dental

[Youtube](#) Huge Dental

G L O B A L   D E N T A L   S U P P L I E R

# HUGE



*3D Printer*



*3D Printing Material*



*Oral Scanner*



*PMMA BLOCK*



*Zirconia Block*



*Casting Wax*

## 01 / Digital Full Denture

## 02 / PMMA BLOCK

05 / Multilayer PMMA BLOCK

06 / Monolayer PMMA BLOCK

06 / Pink PMMA BLOCK

07 / Clear PMMA BLOCK

07 / Full Denture PMMA BLOCK

## 09 / Zirconia Block

Zirconia Block(Premium)

11 / High Translucency (HT)

11 / High Strength (HS)

12 / Anterior Translucency (AT)

12 / Multi-layered High Translucency (MHT)

13 / 3D Multilayer Zirconia Block

Zirconia Block (Prime)

14 / High Translucency (HT)

14 / High Strength (HS)

## 16 / Casting Wax

## 17 / i-Vinci Oral Scanner

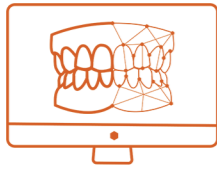
## 19 / Vinci 3D Printer

## 21 / Memorabilia

# HUGE

# CONTENTS

## Advantages



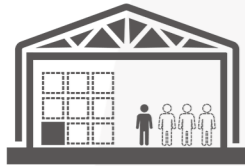
### Predictable

Avoid human error and more accurate



### Faster

Production time is reduced from 15 to 8 days



### Resource Saving

Not only labor but also storage space

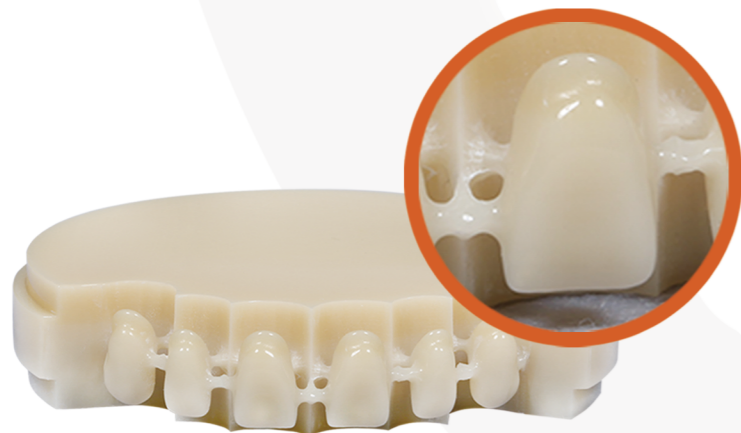


### Digital Copy

Store the information and easy remake

## Seamless Gradient

HUGE Multilayer PMMA BLOCK has a unique seamless gradient to make the color change smoothly from teeth neck to cut end.



# DIGITAL FULL DENTURE

A complete manufacturing process for the rapid digital production of removable full-arch dentures



## Pink PMMA BLOCK

Removable structures for dentures(Denture Base)



### 4 Shades

2S

2ST

3S

3ST

## Multilayer PMMA BLOCK

Removable structures for dentures(Dental Arch)



### 22 Shades

A1	B1	C1	D2	BL
A2	B2	C2	D3	BL1
A3	B3	C3	D4	BL2
A3.5	B4	C4	2M2	BL3
A4				BL4

More choices for your denture arch Standard type is closer to Classic Colors.

Translucent type has better brightness and cut end translucency make your full denture aesthetic.



# HUGE · PMMA BLOCK

More Than A Temporary Material



## HIGHLY CROSS-LINKED PMMA MATERIAL

Ensures high wear-resistance, low moisture absorption and offers superior performance.



## CONSISTENT SHADES IN 24 COLORS

HUGE is the global supplier in the world which offers 22 shades for Multilayer PMMA Block and 24 shades for Monolayer PMMA Block.

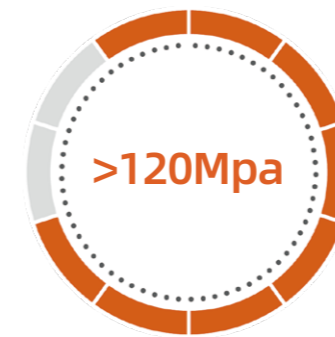


## ALL SIZES TO FIT ALL TYPES OF MACHINES

HUGE PMMA BLOCKS are guaranteed to perfectly fit all types of milling machines.



## High Flexural Strength



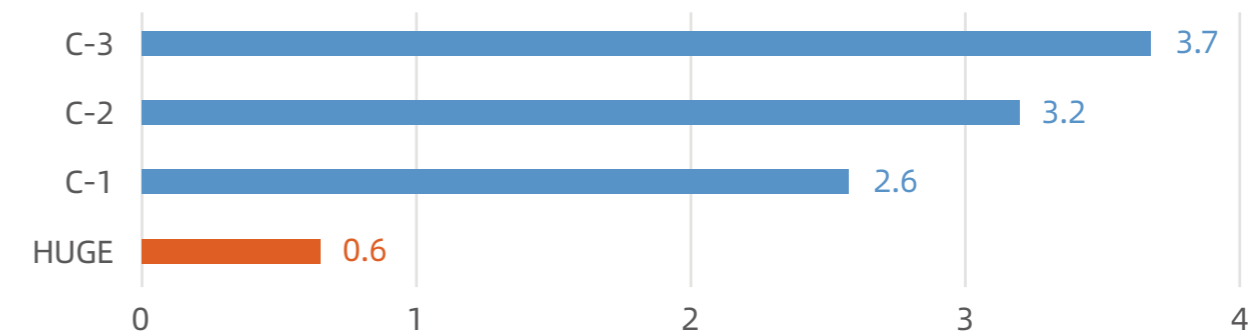
Huge Digital Full Denture PMMA BLOCK

VS



Conventional PMMA BLOCK

## Low Water Solubility



## The Most Shades & Systems Choices

Not only Classic 16 colors.

Available for 7 different systems and accept customized system.

# Multilayer PMMA BLOCK

More than a temporary material

## Shades Available

16A-D, 2M2, BL, BL1, BL2, BL3, BL4

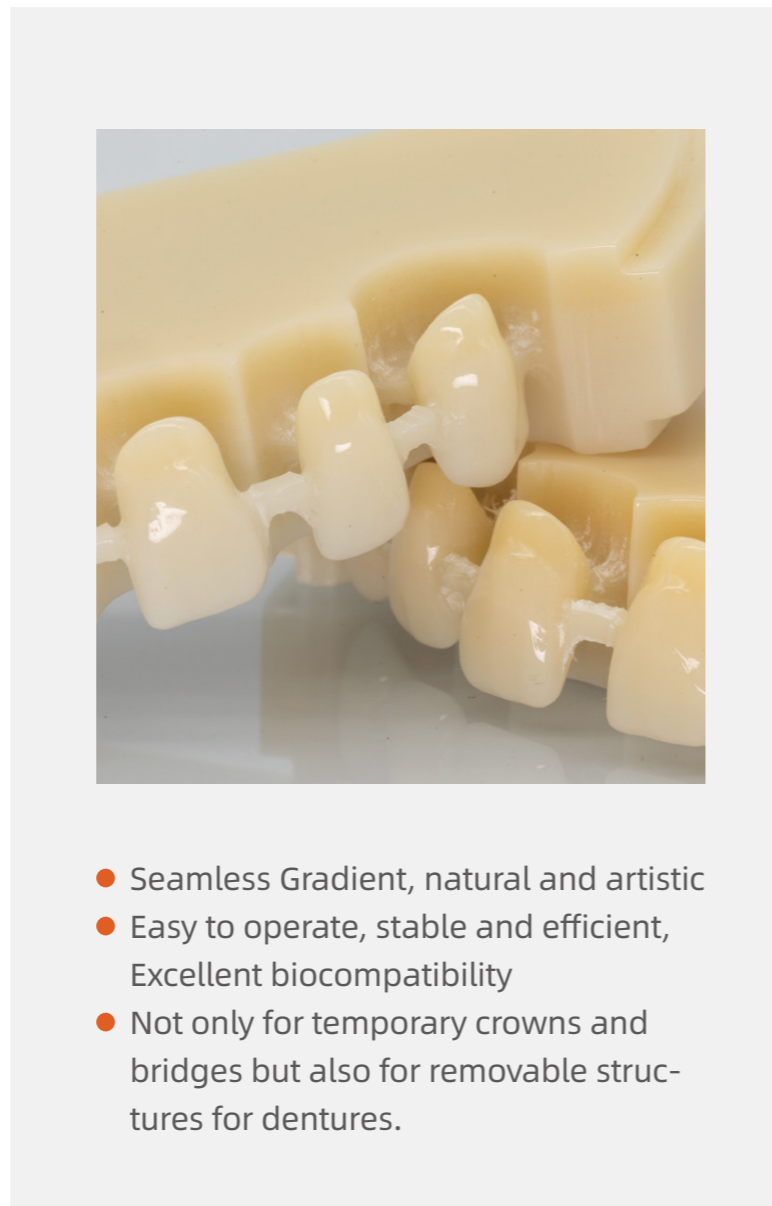
A1	B1	C1	D2	BL
A2	B2	C2	D3	BL1
A3	B3	C3	D4	BL2
A3.5	B4	C4	2M2	BL3
A4				BL4

## Systems Available

Open system  $\phi 98/\phi 100/\phi 104/\phi 108$ mm  
 Z-System  $\phi 95$ mm / AG-System  $\phi 89$   
 S-System 20mm/40mm/65mm cube with handle  
 L-System 72mm cube R-System 76mm cube

## Technical Data

Properties	Parameter
Flexural strength	>120 Mpa
Modulus of Elasticity	>2200Mpa
Water Absorption	<20 $\mu$ g / mm <sup>3</sup>
Water Solubility	<0.8 $\mu$ g/mm <sup>3</sup>



- Seamless Gradient, natural and artistic
- Easy to operate, stable and efficient, Excellent biocompatibility
- Not only for temporary crowns and bridges but also for removable structures for dentures.



Thickness: 10mm to 30mm

# Monolayer PMMA BLOCK

More than a temporary material

## Shades Available

16A-D, A0, B0, BL, BL1, BL2, BL3, BL4

A0	B0	C1	D2	BL
A1	B1	C2	D3	BL1
A2	B2	C3	D4	BL2
A3	B3	C4	2M2	BL3
A3.5	B4			BL4
A4				

## Systems Available

Open system  $\phi 98/\phi 100/\phi 104/\phi 108$ mm  
 Z-System  $\phi 95$ mm / AG-System  $\phi 89$   
 S-System 20mm/40mm/65mm cube with handle  
 L-System 72mm cube R-System 76mm cube



Thickness: 10mm to 30mm

- Mills purely and polishes easily
- Easy to operate, stable and efficient, Excellent biocompatibility
- For long-term temporaries with a wear period up to 12 months

# Pink PMMA BLOCK

More than a temporary material

- Suitable material for milling a denture base
- Easy to operate, stable and low water absorption, Excellent biocompatibility
- For long-term temporaries with a wear period up to 12 months

## Shades Available

2S, 2ST, 3S, 3ST

2S	2ST	3S	3ST
----	-----	----	-----



# Clear PMMA BLOCK

Recommend Application:

Dental night guard, Implant guide Male mold for casting



- Crystal clear surface with outstanding translucency
- Burns out without a trace

### Shades Available

Pink, Orange, Clear, Red

### Technical Data

Properties	Parameter
Flexural strength	>120 Mpa
Modulus of Elasticity	>2200Mpa
Water Absorption	<20 $\mu$ g / mm <sup>3</sup>
Water Solubility	<0.8 $\mu$ g/mm <sup>3</sup>

# Full Denture PMMA BLOCK

More than a temporary material



- Reduce production process
- Denture Arch is stable on the denture base.
- Better accuracy than hand-made full denture.

### Shades Available

Denture Base: 2S 3ST 3S 3ST  
Denture Arch: 16A-D, 2M2, BL, BL1, BL2, BL3, BL4

### Technical Data

Properties	Parameter
Flexural strength	>120 Mpa
Modulus of Elasticity	>2200Mpa
Water Absorption	<20 $\mu$ g / mm <sup>3</sup>
Water Solubility	<0.8 $\mu$ g/mm <sup>3</sup>

## PMMA specification sheet

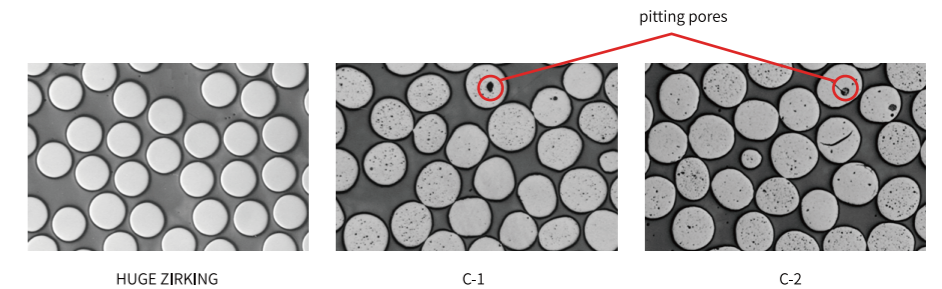
DIMENSION (mm)	MONOLAYER PMMA	MULTILAYER PMMA	Clear PMMA
	Φ98 x 10	√	√
	Φ98 x 12	√	√
	Φ98 x 14	√	√
	Φ98 x 16	√	√
	Φ98 x 18	√	√
	Φ98 x 20	√	√
	Φ98 x 22	√	√
	Φ98 x 25	√	√
	Φ98 x 30	√	√
	Φ98 x 40	√	√
	Φ95 x 10	√	√
	Φ95 x 12	√	√
	Φ95 x 14	√	√
	Φ95 x 16	√	√
	Φ95 x 18	√	√
	Φ95 x 20	√	√
	Φ95 x 22	√	√
	Φ95 x 25	√	√
	Φ95 x 30	√	√
	Φ95 x 30	√	√
	89 x 71 x 12	√	√
	89 x 71 x 14	√	√
	89 x 71 x 16	√	√
	89 x 71 x 18	√	√
	89 x 71 x 20	√	√
	89 x 71 x 22	√	√
	89 x 71 x 25	√	√
	89 x 71 x 30	√	√
	89 x 71 x 30	√	√
	89 x 71 x 30	√	√
	72 x 42 x 14	√	√
	72 x 42 x 16	√	√
	72 x 42 x 18	√	√
	72 x 42 x 20	√	√
	72 x 42 x 22	√	√
	72 x 42 x 25	√	√
	72 x 42 x 25	√	√
	72 x 42 x 25	√	√
	20 x 14 x 15	√	√
	20 x 19 x 15	√	√
	40 x 14 x 15	√	√
	40 x 19 x 15	√	√
	55 x 19 x 15	√	√
	65 x 25 x 22	√	√
	65 x 40 x 22	√	√
	65 x 40 x 22	√	√
	65 x 40 x 22	√	√
	65 x 40 x 22	√	√



**zirking** | Zirconia Block (Premium)  
Made of 100% Tosoh Powder

## High Strength

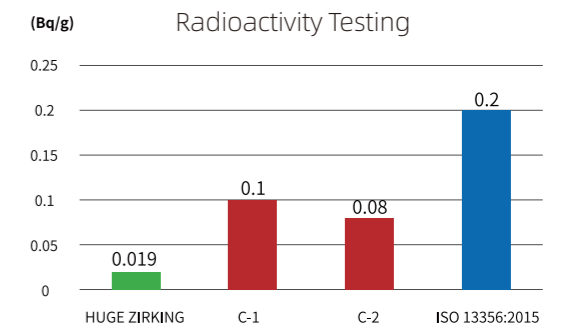
These pitting pores will weaken strength and lifetime of the restorations. With Zirking Zirconia Block low reject rate is warranted. It polishes perfectly, without splinter.



\* The particle cross section comparison of the raw material under electron \*

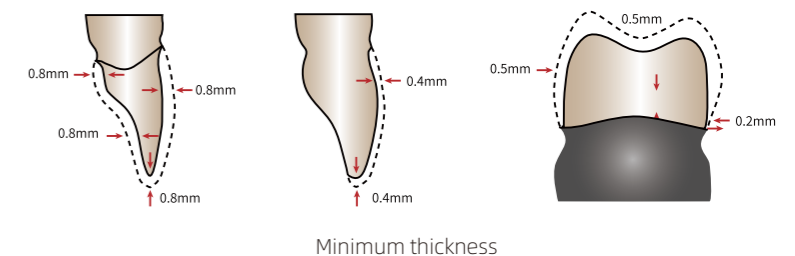
## Minimized Risk

Each batch of the raw material is tested for radioactivity and heavy metal, before production of Zirking Zirconia Block (Premium), to ensure the safety and hypoallergenic.



## Ultra-thin Thickness of Restorations

Very detailed and realistic crown, bridge and abutment can be made from Zirking Zirconia Block (Silver), due to the steady quality from the raw material.



## Excellent Color Stability due to High Stability of Raw Material





White & 16 A-D classical shades

## • High Translucency (HT)

### Recommend Applications

Full Contour Crown, Bridge, Cantilever Bridge, Inlay Bridge, Maryland Bridge, Telescopic Crown

### Product Features

- Reproduce shades perfect
- Full contour restoration for anterior and posterior areas
- High strength with attractive translucency
- Adaptation to natural teeth

### Technical Data

Translucency	41%
Flexural Strength (3-point)	1100Mpa
Density	>3.27 g/cm <sup>3</sup>
Sintered Density	6.08g/cm <sup>3</sup>
Chemical Solubility	<100ug/cm <sup>2</sup>
Radioactivity	0.019Bq/g
CTE	(10.5±0.5) x 10 <sup>-6</sup> k <sup>-1</sup>
Vickers Hardness HV 10	1250 HV10
Sintering Temperature	1450 °C



White & 16 A-D classical shades

## • Anterior Translucency (AT)

### Recommend Applications

Crown, 2-3 Unit Bridge, Telescopic Crown, Veneer

### Product Features

- Extremely high translucent
- High aesthetics, natural look of teeth
- Excellent alternative to lithium disilicate with double strength

### Technical Data

Translucency	49%
Flexural Strength (3-point)	700Mpa
Density	>3.27g/cm <sup>3</sup>
Sintered Density	6.05g/cm <sup>3</sup>
Chemical Solubility	<100ug/cm <sup>2</sup>
Radioactivity	0.019Bq/g
CTE	(10.2±0.5) x 10 <sup>-6</sup> k <sup>-1</sup>
Vickers Hardness HV 10	1250 HV10
Sintering Temperature	1450 °C

## • High Strength (HS)

### Recommend Applications

Copying, Abutment, Bridge, Cantilever Bridge, Inlay Bridge, Maryland Bridge, Telescopic Crown

### Product Features

- Opaque framework, the suitable option for coping & abutment
- Highest strength up to 1400Mpa
- Good fracture resistance
- Mills and polishes easily

### Technical Data

Translucency	35%
Flexural Strength (3-point)	1400Mpa
Density	>3.1 g/cm <sup>3</sup>
Sintered Density	6.08g/cm <sup>3</sup>
Chemical Solubility	<100ug/cm <sup>2</sup>
Radioactivity	0.019Bq/g
CTE	(10.5±0.5) x 10 <sup>-6</sup> k <sup>-1</sup>
Vickers Hardness HV 10	1250 HV10
Sintering Temperature	1500 °C



Shades available: White

## • Multi-layered High Translucency (MHT)

### Recommend Applications

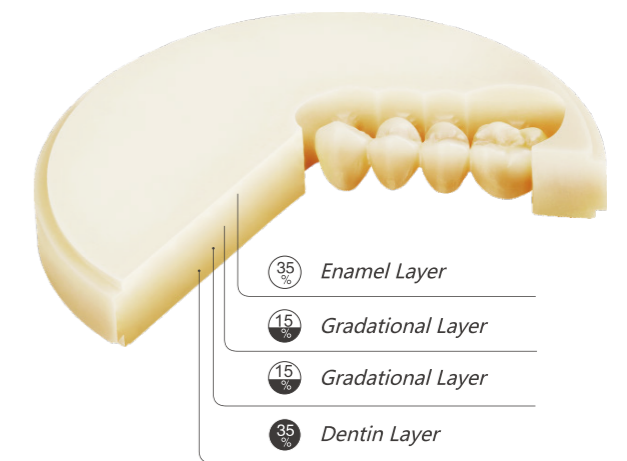
Crown, Bridge, Cantilever Bridge, Maryland Bridge, Veneer, Inlay & Onlay

### Product Features

- Natural tooth esthetic
- Time-saving and easy processing
- Excellent translucency, for A Light is 36% for A Dark is from 27% to 34%

### Technical Data

Flexural Strength (3-point)	1100Mpa
Density	>3.3g/cm <sup>3</sup>
Sintered Density	6.08g/cm <sup>3</sup>
Chemical Solubility	<100ug/cm <sup>2</sup>
Radioactivity	0.019Bq/g
CTE	(10.5±0.5) x 10 <sup>-6</sup> k <sup>-1</sup>
Vickers Hardness HV 10	1250
Sintering Temperature	1450 °C



Shades available: A Light, A Dark

# Zirconia Block (Prime) ▼

## High Translucency (HT)

### Recommend Applications

Crown, 2-4 Unit Bridge, Cantilever Bridge, Inlay Bridge, Maryland Bridge, Telescopic Crown

### Shades Available

White & 16A-D classical shades



### Technical Data

Light Translucency	41%
Flexural Strength	>1100(Mpa)
Density After Sintering(g/cm <sup>3</sup> )	≥6.0g/cm <sup>3</sup>
CTE(20-500 °C)	(10.5 ± 1.0) × 10 <sup>-6</sup> k <sup>-1</sup>
Chemical Solubility After Sintering(μg/cm <sup>2</sup> )	<100
Radioactivity(Bq/g)	<0.1

## High Strength (HS)

### Recommend Applications

Coping, 2-4 Unit Bridge, Cantilever Bridge, Inlay Bridge, Maryland Bridge, Telescopic Crown

### Shades Available

White



### Technical Data

Light Translucency	35%
Flexural Strength	>1400(Mpa)
Density After Sintering(g/cm <sup>3</sup> )	≥6.0g/cm <sup>3</sup>
CTE(20-500 °C)	(10.5 ± 1.0) × 10 <sup>-6</sup> k <sup>-1</sup>
Chemical Solubility After Sintering(μg/cm <sup>2</sup> )	<100
Radioactivity(Bq/g)	<0.1

Prime Line for Economical Choice

## Anterior Translucency (AT)

### Recommend Applications

Crown, less than 3 unit Bridge  
Inlay Veneer

### Shades Available

White



### Technical Data

Sintered density	≥6.0g/cm <sup>3</sup>
Bending Strength	≥600MPa (Av.)
Transmittance	49%
Sintering temperature	Recommend 1450°C

## Multilayer High Translucency (MHT)

### Recommend Applications

Crown, Bridge  
Inlay Veneer

### Shades Available

16A-D classical shade



### Technical Data

Sintered density	≥6.0g/cm <sup>3</sup>
Bending Strength	≥900MPa (Av.)
Transmittance	23%-36%
Sintering temperature	1400-1580°C, recommend 1450°C

# GM Gradient Multilayer Zirconia Block

Gradient Multilayer provide you the ultimate aesthetic experience



1

## Seamless Gradient Natural Aesthetics

Seamless gradient to make the color change smoothly from teeth neck to cut end. HUGE 3D Multilayer Zirconia provide you natural aesthetics of teeth.



2

## Translucency Gradient Bionic Transparency

From 47.5% transparency of cut end to 44% of tooth neck, unique gradient achieve life-like texture.

3

## Flexural Strength Gradient Comfort and Strength

The flexural strength shows gradient from 700Mpa to 1060Mpa in order to protect opposing dentin by lower strength meanwhile ensure the strength in occlusion.

## Seamless Gradient, natural and artistic Easy to operate, stable and efficient

- Flexural Strength: 700-1060Mpa
- Translucency: 44-47.5%
- Shades Available: 16 Classic colors from A1 to D4

\* HUGE Dental provide both Premium Series and Prime Series Gradient Multilayer Zirconia Block \*

## Casting Wax ▼

### Indication

To fabricate male mold for oral hard and soft tissue or restoration model

### Product Features

- Natural tooth esthetic
- Time-saving and easy processing
- Excellent translucency, for A Light is 36% for A Dark is from 27% to 34%



Shades available: Blue, White

### Technical Data

Density	0.89-0.93g/cm <sup>3</sup>
Drop Melting Point	116 C
Shore Hardness	50-60Shore D

### Product Compatibility

SYSTEM	DIMENSION	PACK	SHADE	WAX DISC
 OPEN SYSTEM	Φ98 x 10(mm)	1 DISC/PACK	BLUE/WHITE	✓
	Φ98 x 12(mm)	1 DISC/PACK	BLUE/WHITE	✓
	Φ98 x 14(mm)	1 DISC/PACK	BLUE/WHITE	✓
	Φ98 x 16(mm)	1 DISC/PACK	BLUE/WHITE	✓
	Φ98 x 18(mm)	1 DISC/PACK	BLUE/WHITE	✓
	Φ98 x 20(mm)	1 DISC/PACK	BLUE/WHITE	✓
	Φ98 x 22(mm)	1 DISC/PACK	BLUE/WHITE	✓
	Φ98 x 25(mm)	1 DISC/PACK	BLUE/WHITE	✓
 Z-95MM SYSTEM	Φ95 x 10(mm)	1 DISC/PACK	BLUE/WHITE	✓
	Φ95 x 12(mm)	1 DISC/PACK	BLUE/WHITE	✓
	Φ95 x 14(mm)	1 DISC/PACK	BLUE/WHITE	✓
	Φ95 x 16(mm)	1 DISC/PACK	BLUE/WHITE	✓
	Φ95 x 18(mm)	1 DISC/PACK	BLUE/WHITE	✓
	Φ95 x 20(mm)	1 DISC/PACK	BLUE/WHITE	✓
	Φ95 x 22(mm)	1 DISC/PACK	BLUE/WHITE	✓
 A-71MM SYSTEM	89 x 71 x 13(mm)	1 DISC/PACK	BLUE/WHITE	✓
	89 x 71 x 20(mm)	1 DISC/PACK	BLUE/WHITE	✓





## ACCURATE, PRECISION AND FAST

Bring an unprecedented oral treatment experience

### HUGE SCANNER

#### • SHORT TREATMENT PERIOD

Data can be obtained directly from the mouth, 3 minutes to take the model, and 1 hour to complete the denture restoration.

#### • HIGH DATA ACCURACY

High accurate scanning data, and it is convenient for data storage and trace.

#### • COMFORTABLE

Short mouth opening time, no abnormal sensation in the mouth, and available to be paused at any time.

#### • INFORMATIVE

The visual digital model can help analyze and simulate intraoral changes in time, such as tooth wear, gingival recession, etc.

### TRADITIONAL IMPRESSION

#### • LONG TREATMENT CYCLE

It takes 5-10 minutes for impression and usually takes 1-2 weeks to complete the dental restoration. The rework rate is high.

#### • LOW DATA ACCURACY

Indirectly data access through multiple processes, e.g. impression, reversal, and scanning, which reduces the accuracy of data.

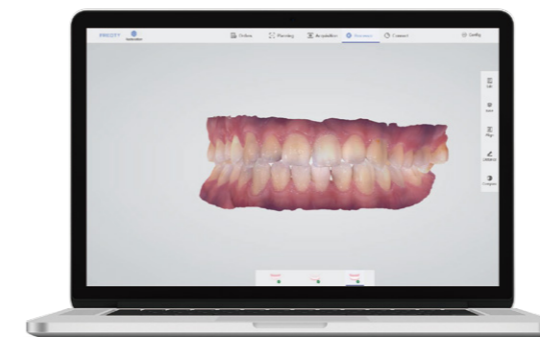
#### • UNCOMFORTABLE

Long patient's mouth opening time impacts impression taking experience, and the abnormal sensation will lead to nausea and vomiting.

#### • LESS INFORMATION

It is impossible to observe the dynamic changes based on the single static model data.

Huge Scanner	Parameters
Scanning technology	Video scanning
Size (L*W*H)	216mmx40mmx36mm
Weight	246g
Tip	Multiple specifications, repeated usage
Specification (L*W*H)	83.4x19.6x14.6mm
Window Size	17x15mm
Scanning Depth	15mm
Data Format	STL, PLY, PTY
Interface	USB 3.0
Full Dentition Scanning Speed	< 5 min



AI technology improves intelligent scanning experience.



Clear cervical margin, vivid color and high precision.



A variety of scanning tips to meet various complex cases.



Fast scanning speed, easy to use.



Portable and micro device, easy to operate.



Powder free for true color scanning.

## MICRO DEVICE, COMPREHENSIVE VISION, COMFORTABLE EXPERIENCE

### Portable pen-type design

246g small and exquisite tip

14mm ultra-low entrance height

17mm excellent scanning depth



# Vinci3D Printer

Ideal for precise and high-speed dental printing.



## ADVANTAGES

- Widely used in 3D dentistry
- Large print format
- High-speed printing
- High printing accuracy
- Not only for lab but also for dental clinic
- Simple operation, saving materials
- Excellent value for money



## Available Material



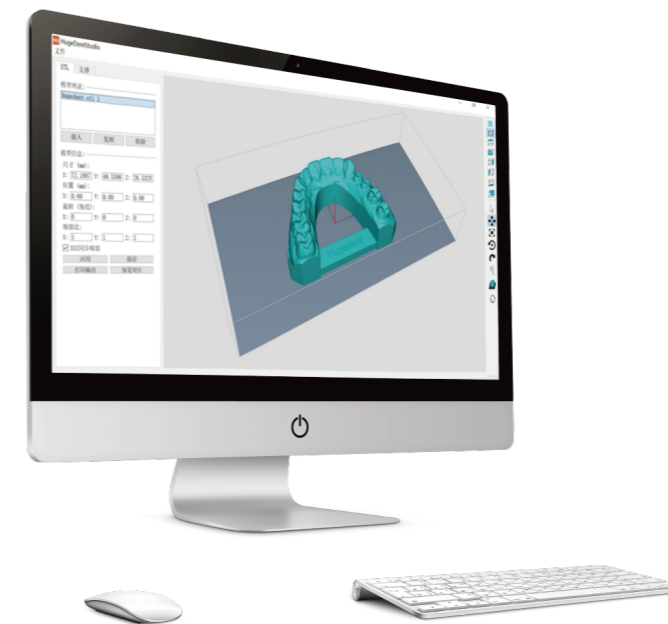
Ortho Model

Teeth Model

Guide  
(coming soon)

Gingiva  
(coming soon)

Cast  
(coming soon)



## HUGE DLP Model Printing Solution

Available 3D printer and related printing material promises the high precision and speed, allows doctors to easily make a stable and reliable cases meeting the demands of immediate chair-side restoration.

Specification	Building envelop (WxLxH)	Approx. 144x81x150 mm
	Accuracy	< 50 μm
	Layer thickness	20-100 μm
	Light source	405 nm UV LED
	Manufacturing speed	20-40 mm/h



## The Leading Dental Supplier

HUGE Dental was the first multi-layered Synthetic Polymer Teeth manufacturer in China, and since then, HUGE has been dedicating to be the leading supplier of dental material in the world.

To provide professional dental products and services, Shandong Huge Dental Material Corporation (SHD for short) that integrates R&D, manufacturing, sales of dental products and services, was founded in 2014 in Rizhao Shandong, China, the United Nation's Best Cities for Residences.

Until 2017, there are three R&D centers functioning independently in Beijing, Qingdao and Rizhao, China. Over 400 employees in HUGE are making contributions each day, to our clients in China and abroad.

The company is ISO13485 certified and the products are listed or registered with CFDA(China), CE(EU), FDA(USA), MDL and MDEL(Canada), JIS(Japan) and many other countries. Due to the delicate sales network HUGE had built, dental professionals in all the major cities of China are able to acquire HUGE products, and over 50 million population are benefited. In the international market, people from 80+ countries/regions are using HUGE products.

There is nothing in the world would stop HUGE committing to improving dental technique and reducing the cost of dental care.

## MEMORABILIA

### 2006-2010

HUGE was restructured refreshed, dedicating into high-quality dental material R&D, and the CAD/CAM tooth molding center was established, 8 ranges of teeth with different mould design that can be applied to all races worldwide were launched; HUGE RIZHAO manufacturing center was set up and became one of the largest synthetic polymer teeth manufacturers in China; HUGE products were exported to 30+ countries;

### 2011-2016

National Certification of New Hi-tech Enterprise was awarded to HUGE. The company was listed with NEEQ in 2015, and in the same year, HUGE acquired Enjoy Laboratory, which is one of the most advanced Glass Ionomer Cement material research and development lab in China.

Many newer dental products such as PMMA BLOCK, Zirconia Block, Light Curing Individual Tray, PERFIT A Silicone Impression Material and Glass Ionomer Cement were launched, HUGE products were exported to 80 countries;

KAIJING synthetic polymer teeth and PERFIT A Silicone Impression Material are one of the most popular brands that widely used in the Chinese market;

### 2017-2018

HUGE R&D building started to work;

HUGE India company started to work;

Invisible Orthodontic Appliance was launched;

30%+ increase of yearly revenue continued;

### 2019-2021

Many more new products for adhesive, direct restorations and indirect restorations are to be launched; Digital full denture solution are available and the new series of synthetic polymer teeth improves the hardness over 40HV0.2.