

YOUR ALL-IN-ONE PRODUCT

LUTING II

This is HUGE's unique cement technology. We offer a glass ionomer cement that can be used for both bonding and filling. It has all the functions of Luting I and Filling I, and is a more convenient restoration product for dentists.

In performance, Luting II is excellent. Its bonding performance is almost the same as Luting I, but its compressive strength is better than Filling I.

Technical Date	Luting I	Luting II		Filling I
		For Luting	For Filling	
Working time	2min10s	2min10s	3min00s	2min20s
Net setting time	3min05s	3min15s	2min45s	2min45s
Film thickness (µm)	12	13	/	/
Compressive strength (Mpa)	156	149	216	215

* All data from HUGE Laboratory

ORDER DETAILS

POWDER AND LIQUID

Luting I

Standard: 30g Powder+25g Liquid

Mini: 10g Powder+10g Liquid

colour: /

Luting II

Standard: 30g Powder+25g Liquid

Mini: 10g Powder+10g

colour: ○ ● ● ●

Filling I

Standard: 15g Powder+12g Liquid

Mini: 5g Powder+5g Liquid

colour: ● ● ●



Shandong Huge Dental Material Corporation

Add / No. 68 Shanhai Road, Donggang District, Rizhao City, Shandong Province, 276800, P.R. China.

Tel / +86 (633) 2277268 marketing@hugedental.com www.hugedental.com

Facebook Huge Dental

Instagram Huge Dental

Youtube Huge Dental

HUGE | GLASS IONOMER CEMENT

COMPARISON WITH BRAND C



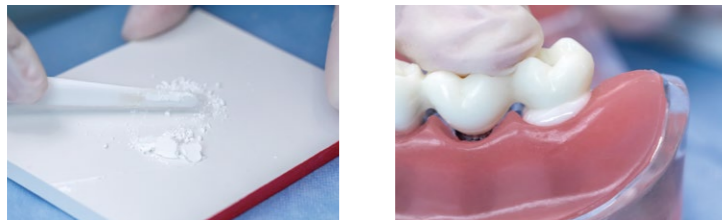
YOUR IDEAL BRAND
AND YOUR IDEAL
RESTORATION MATERIALS

GLASS IONOMER LUTING CEMENT

LUTING I

HUGE Luting I is a truly biocompatible, quick-set, contemporary luting glass ionomer that guarantees reliable and lasting restorations. It is designed for cementation of metal-based or high strength (zirconia based) inlays, onlays, crowns, bridges, posts and screws. It can also be used for cementation of orthodontic bands.

Based on HUGE's proven self-adhesive technology, Luting I performs consistently and exceptionally well. It has good fluidity and is easy to handle. Combined with excellent biocompatibility, it virtually eliminates postoperative allergic reactions.



*HUGE Luting I is excellent in mixing performance.

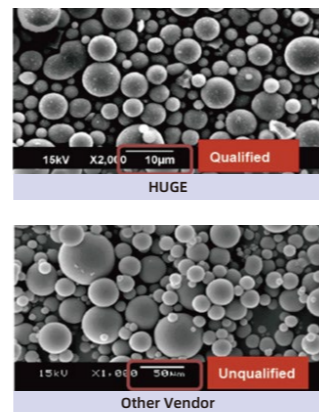
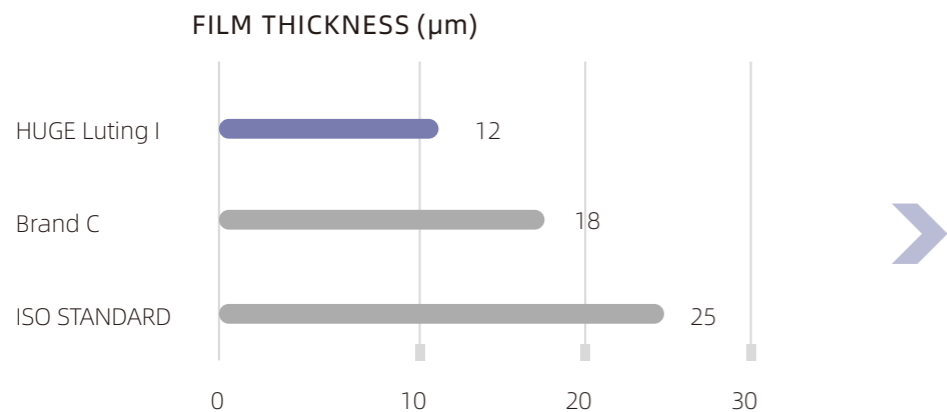


Compared with brand C, HUGE Luting I not only provides the same applications, but also has the function of bonding in orthodontic restoration.



IDEAL FILM THICKNESS

The ideal film thickness will allow the restoration to perfectly fit the abutment without causing clinical elevation. The ISO standard is less than or equal to 25um. The lower the data, the higher the clinical application value.

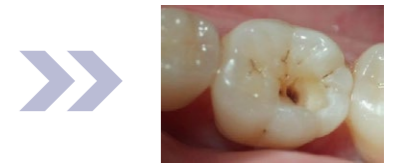


GLASS IONOMER RESTORATION CEMENT

FILLING I

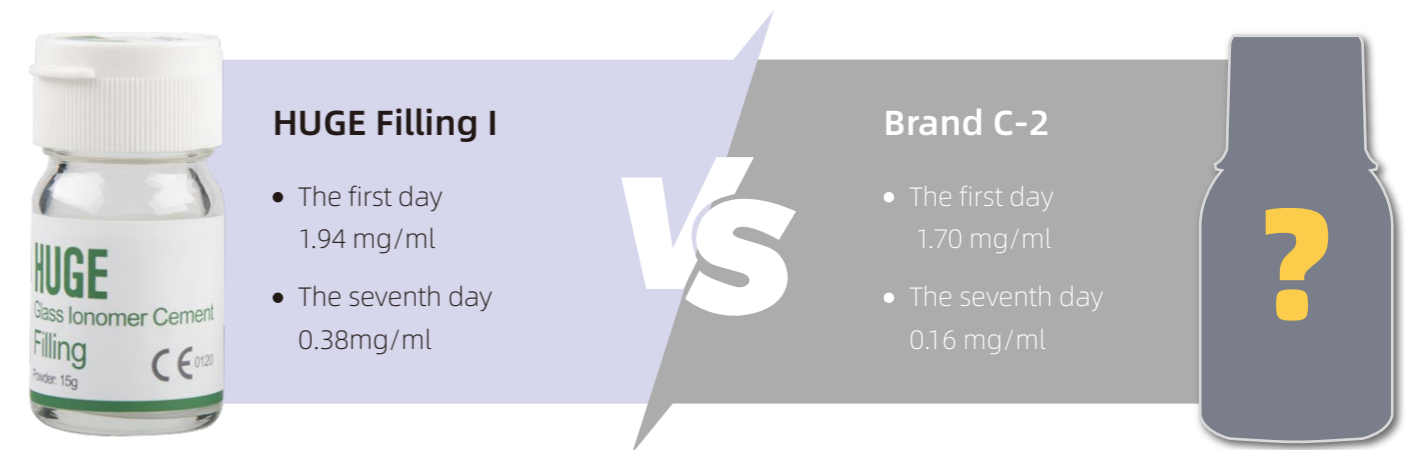
HUGE Filling I is an excellent self-adhesive, bulk glass ionomer cement that guarantees reliable and lasting restorations. It is designed for the restoration of deciduous teeth as well as the restoration of Class III, V and limited Class I cavities. At the same time, it can also be used for base linings under composite and amalgam and core build-up.

It is a multifunctional restorative material in filling applications. Compared to brand C, its base lining function is excellent.



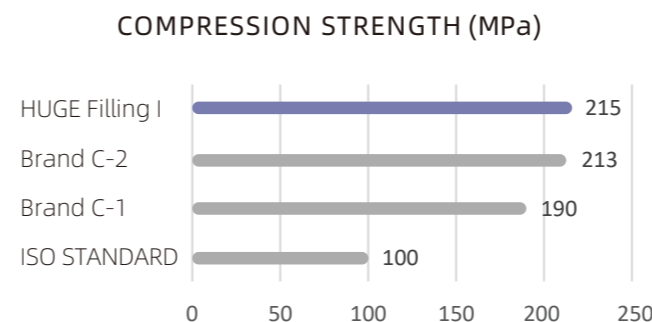
LONG TERM FLUORIDE RELEASE

Excellent glass ionomer material provides high fluoride release for increased defense against dental cavities. At the same time, this advantage can last for a long time.



COMPRESSION STRENGTH

By comparison, the compressive strength of Filling I is higher and the filling effect is better. It is suitable for restorations in a variety of cavity shapes, creating longer-lasting restorations.



SETTING TIMES

With sufficient working time and fast setting time, HUGE Filling I brings better clinical experience to both dentists and patients. The reduction in chair time is conducive to improving treatment efficiency.

