

# HUGE

## Proseal F

Enamel Coating Resin



According to ADA/AAPD evidence-based guidelines (Wright JT et al., 2016), pit-and-fissure sealants significantly reduce the risk of caries development in children and adolescents.

**Proseal F Enamel Coating Resin** is a light-curing pit & fissure sealant designed for preventive dentistry. Its excellent flowability allows it to easily penetrate enamel pits and fissures, forming a tight, protective seal that prevents bacterial accumulation and food debris. Proseal F also features sustained fluoride release to enhance caries prevention and support enamel remineralization. Its unique Color-Change Technology provides a clear visual indication of placement, helping clinicians ensure complete coverage and improving application accuracy and efficiency.

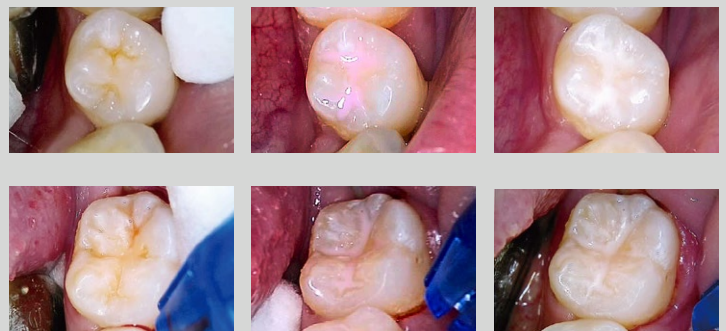
### Features & Advantages

- Changes from pink to white after light curing, helping visualize placement
- Bonds with enamel, providing long-lasting and reliable protection
- Low viscosity allows easy flow into pits and fissures
- Releases fluoride stably to prevent secondary cavities
- Lower filler content reduces occlusal adjustments compared to filled sealants
- Tiny tips ensure accurate placement
- Offers excellent stain resistance
- BPA-free formula
- No pungent odor

### Clinical Application with Proseal F

*A 27-year-old male patient presented with deep brownish fissures on his molars. Fissure sealant treatment was performed using Proseal F.*

*Photo and case provided by Dr. Cindy (Indonesia).*



Before Treatment

Proseal F Applied

Proseal F Cured

## Easy-to-Use Technique



Prepare the tooth

Etch

Rinse and dry

Seal

Light cure for 10s

Finish



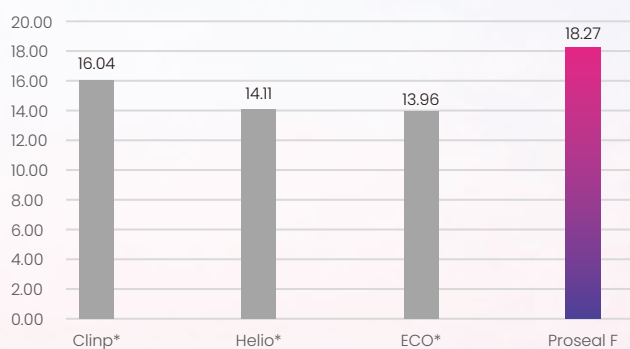
### Upgraded Tip Design

- ✓ Minimizes Leakage
- ✓ Virtually No Bubbles
- ✓ Ensures Accurate Application

### Packaging:

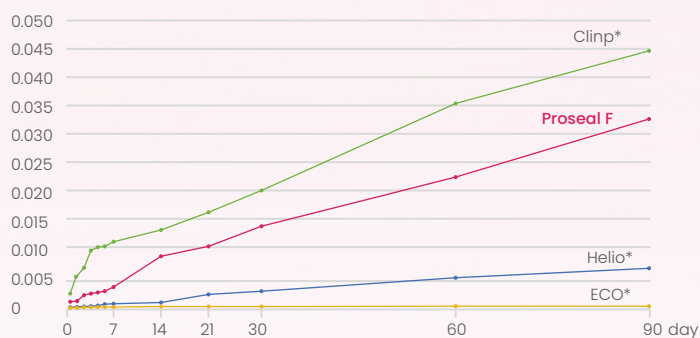
1.5 g \* 1 syringe + 10 dispensing tips

### Shear Bond Strength (MPa)



\* Data from HUGE laboratory

### 90-Day Cumulative Fluoride Release (%)



\* Data from HUGE laboratory

Compressive strength (MPa)	325.70
Light intensity (mW/ cm <sup>2</sup> ) for curing	> 800
Wavelength (nm) for curing	400-500

\* Data from HUGE laboratory



## Shandong Huge Dental Material Corporation

Add / No.68 Shanhai Road, Donggang District, Rizhao City, Shandong Province, 276800, P.R. China.

Tel / +86 (633) 2277268 marketing@hugedental.com www.hugedental.com

Facebook Huge Dental

Instagram Huge Dental

Youtube Huge Dental

v1.1 - 202506