

# Wide Selection of Composite Teeth

**HUGE**

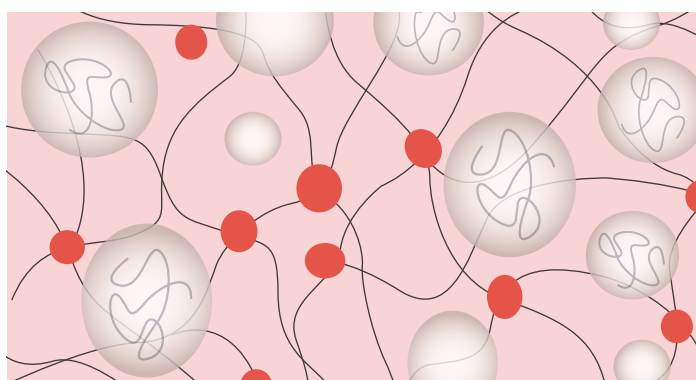
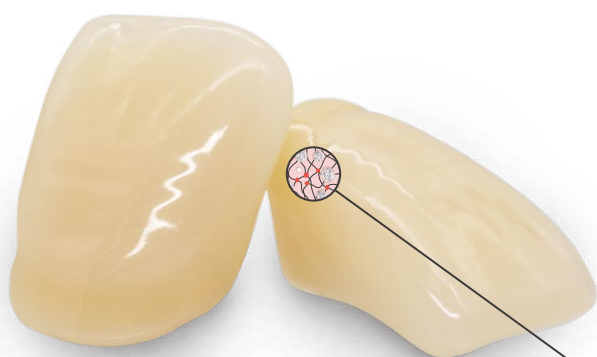
Extra hard teeth made from MAC (Micro Armor Composite) combine functionality and aesthetics to meet your unique needs.



## Durable Multilayer Structure

### Innovative Technology for Extra Hard Teeth

KAIPUS & KAIFENG Composite Teeth are designed for aesthetic, long-lasting and functional dentures.



### Enamel Layer

#### Micro Armor Composite Resin

Filled with spherical filler with over 45% filling ratio, the MAC is applied to the enamel layer for aesthetics and practicality. HUGE advanced mold technology extends enamel to the lingual side, enhancing overall strength while ensuring both beauty and practicality.

### Dentin Core & Back Incisal

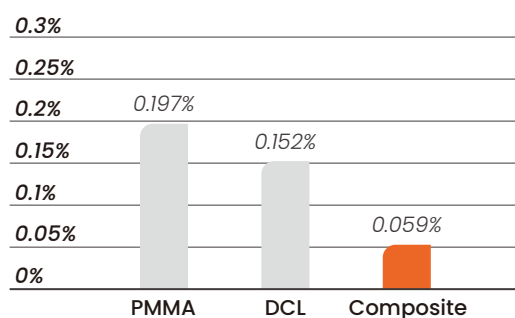
#### High-quality PMMA

Premium PMMA provides superior wear and stain resistance, with a natural incisal-to-cervical transition for a beautiful smile.

	PMMA	DCL	Composite <sup>[1]</sup>
Hardness HV0.2	18	22	40
Compressive strength MPa	313	370	380
Flexural strength MPa	120	130	138
Modulus of elasticity MPa	2235	2346	2580

### Abrasion Resistance<sup>[2]</sup>

Weight loss rate after 60,000 cycles with resin abrasives<sup>[2]</sup>



[1] : Test Report, HUGE Dental, 2024

[2] : Third-party Test Report, 2024




## You can expect from KAIPLUS & KAIFENG Composite Teeth:

Vickers hardness over **44**, enhanced wear-resistance ✓

Choose from a wide range of molds including semi-anatomical and non-anatomical posteriors to enhance individuality ✓

Enjoy long-lasting wear resistance with reduced everyday wear and tear ✓

Designed for aesthetic appeal with optimized translucency and brightness ✓

Product			
	<b>KAIPLUS COMP (Asia)</b>	<b>KAIPLUS COMP (EU/NA)</b>	<b>KAIFENG COMP</b>
Material	Composite Resin	Composite Resin	Composite Resin
Indications	Suitable for full, partial, and implant-supported prostheses		
Layering (Anterior)	4-layer	3-layer	2-layer
Tooth Library	✓	✓	✓
Anterior Morphology	<ul style="list-style-type: none"> <li>■ Short Square</li> <li>▲ Tapering</li> <li>▣ Combination</li> </ul>	<ul style="list-style-type: none"> <li>■ Square</li> <li>● Ovoid</li> <li>▲ Tapering</li> </ul>	<ul style="list-style-type: none"> <li>■ Square</li> <li>● Ovoid</li> <li>▲ Tapering</li> </ul>
Posteriors Cusp Degree	20°	28°	28°
Packing	6*16 8*12	6*16 8*12 28*1	6*16 8*12 28*1
Shades	A1, A2, A3, A3.5	BL3, A1-A4, B1&C1	A2
Remarks	Tooth shape is based on Maist-3 and the enamel layer is made of composite resin, higher translucency		Based on Sonning tooth shape



### Shandong Huge Dental Material Corporation

Add / No.68 Shanhai Road, Donggang District, Rizhao City, Shandong Province, 276800, P.R. China.  
Tel / +86 (633) 2277268 marketing@hugedental.com www.hugedental.com



Follow @Huge Dental