

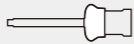





HUGE

Accessories

PERFIT Tray Adhesive		10ML	
Grey Mixing Tips		6+6 PCS	50 PCS
White Mixing Tips		6 PCS	50 PCS
Silicone Cut		1PC	
Dispensing Gun		1 PC	
Automatic Mixer		1 PC	

PERFIT

The hydrophilic precision impression materials



The right **PERFIT**
for every impression task



Shandong Huge Dental Material Corporation

Add / No.68 Shanhai Road, Donggang District, Rizhao City, Shandong Province, 276800, P.R. China.

Tel / +86 (633) 2277268 marketing@hugedental.com www.hugedental.com

Facebook Huge Dental

Instagram Huge Dental

Youtube Huge Dental

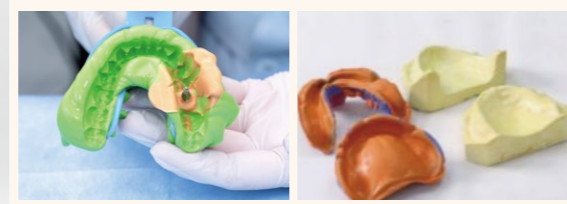
PERFIT VPS Impression Materials.

Professional precision for all indications.

After more than 10 years of practice in the market, PERFIT has developed into one of the most successful and popular impression materials in the world. HUEG continues to enhance its product range to meet the different needs of dentists. You can rest assured you'll find the right impression material for professional precision in the **PERFIT family**.

Perfect Precision For **Complex Impressions**

With an ideal combination of flowability and stability, PERFIT Heavy Body and Light Body can remain at the application site. They are the perfect material for **implant impressions** and **full denture impressions**.



Excellent hydrophilicity and thixotropy

PERFIT impression material is highly hydrophilic. It has an excellent ability to flow in wet areas and accurately reproduce details. Excellent thixotropy ensures that the material does not easily drip from the teeth. It brings a comfortable experience to patients.

Excellent dimensional stability

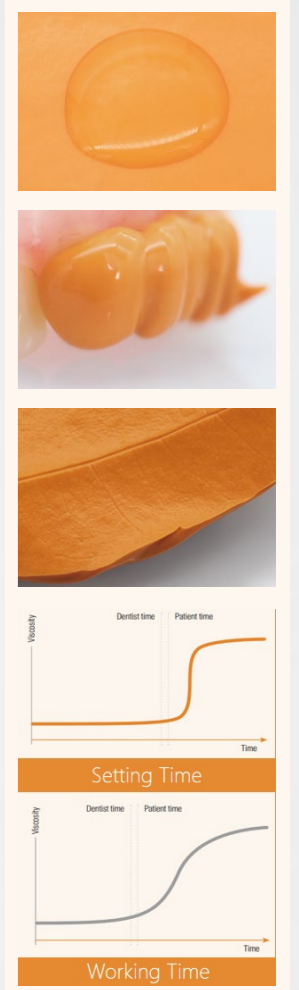
PERFIT impression materials have a low volume shrinkage and excellent dimensional stability. This dimensional stability ensures that the impression shape can be preserved for **28 days**, which is convenient for dentists and laboratory technicians.

"Snap-Set" Technology

PERFIT provides faster curing efficiency. It has sufficient working time and shorter intraoral setting time, which not only facilitates the clinical operation of dentists, but also brings a comfortable clinical experience to patients. And the faster cross-linking time reduces the inaccuracy caused by micro-movement.

Coordinated handling properties

Due to its excellent elastic memory, the material can be easily removed from the mouth and returns to nearly its original shape after removal. PERFIT products are available in various hardness levels, giving dentists multiple options to help them achieve the desired impression.



Clear details and high precision

No bubbles

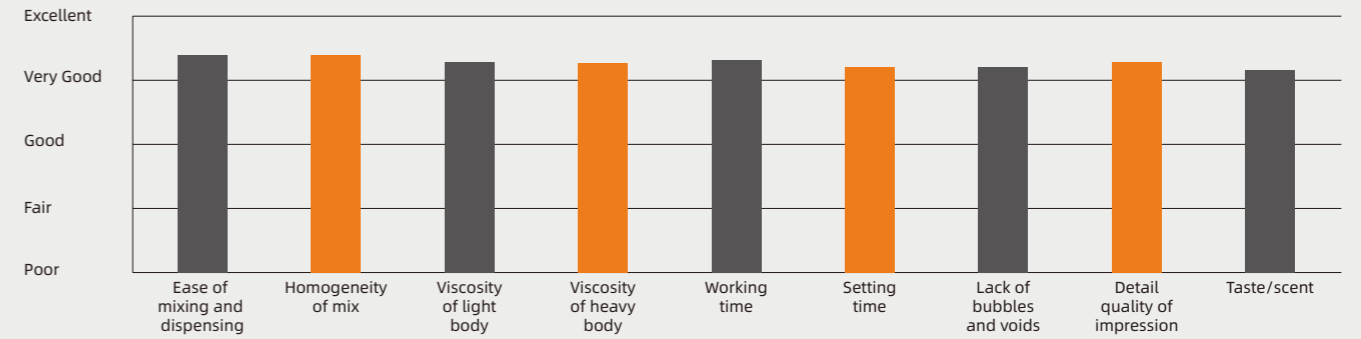
Continuity of the gingival margin

Impression When to use which material.

	Putty	Heavy	Regular	Monophase	Light	Super Light	Bite Registration
Crown and bridge impressions	■	■		■	■		
Inlay and onlay impressions	■	■		■	■		
Implant impressions		■		■	■		
Full denture impressions		■			■	■	
Transparent impressions			■		■		
Bite registration							■

Clinical evaluation and feedback

Evaluation Summary:



"Great detail and handling. Excellent hydrophilic property."

"The ease of loading and consistency of this impression material are very good."

"Very clean impressions, less bubbles."

—Comments from Dental Advisor Evaluators



» I've used this material for 6 months, it's easy mix and accurate dosing of the base and catalyst due to their homogeneity, no taste and smell. I like the density of the material too, there were no pores.

— Dr. Hanna Zielinska

» I'm very satisfied with the material, especially the high hydrophilicity and excellent adhesion between layers. One impression can be cast several models and still has good resistance to deformation.

— Dr. Andrey Zakharenko



PERFIT Regular Body-Transparent

Elastomeric Impression Material

For Clinical Application:

1. Two-step impression technique with wash materials
2. Light-curing guide for
 - a. Mock up restoration
 - b. Bonding of orthodontic brackets
 - c. Occlusal stamp for composite restorations

For Lab Application:

Composite injection moulding technique



Advantages



Extreme Transparency



No bubbles



Ideal Rigidity



High Aesthetic Results



Comparison

PERFIT Regular Body in comparison to competitors: From the comparison, it can be clearly seen that HUGE Regular Body has better transparency. And it rarely produces air bubbles and has high aesthetic effect.



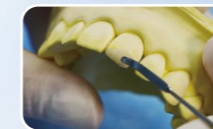
HUGE Brand A Brand B Brand C

Clinical Application Cases

1. Flowable injection technique (Mock-up restoration)



1. Prepare teeth and make the plaster model



2. Finish restoration with wax on plaster model



3. Apply Regular Body onto the plaster model



4. Use Regular Body to make transparent matrix



5. Fill the space with light-curing resins



6. Light cure the resin materials

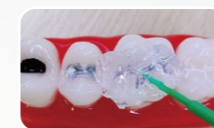


7. Finish restoration after polishing



TrusFIL-Flow Flowable Composite Restorative

2. Occlusal stamp for composite restorations



1. Use Regular Body to make transparent stamp



2. Prepare teeth, etch and apply adhesive



3. Fill with flowable resin or bulk resin



4. Press with the transparent stamp



5. Light cure the resin materials



6. Finish restoration after polishing

3. Indirect method of transferring orthodontic brackets



1. Bond the brackets to the plaster model temporarily



2. Apply Regular Body to make transparent guide



3. Remove temporary adhesive from brackets



4. Prepare teeth, etch and apply adhesive



5. Apply the transparent matrix. Light cure the adhesive



6. Complete one-time transfer brackets

PERFIT Bite Registration

Scannable Bite Registration material for digital workflows.



PERFIT Bite Registration is an addition silicone, which can be used for conventional bite registration techniques in conjunction with indirect restorative procedures. It is also a scannable material that can be used for the optical recording of data when fabricating restorations with **CAD/CAM systems**.

High final hardness

With a hardness of 90 Shore A, PERFIT Bite Registration is easy to trim and grind. This high hardness ensures stable repositioning, delivering precise bite registration for optimal fit in restorations.

Fast setting time

The fast-setting version has an intraoral setting time of just 45 seconds. It enhances patient comfort, improves acceptance, and reduces the risk of inaccuracies during full-mouth recordings.

Scannable

Designed for use with CAD/CAM systems, PERFIT Bite Registration is powder-free, offering high precision in digital scanning and supporting the fabrication of all-ceramic restorations.

Whipped-cream-like consistency

Its whipped-cream-like consistency ensures easy manipulation and stable bite registration. It provides a reliable, comfortable experience for patients, even in challenging cases.



Delivery forms / Technical data

	Putty	Heavy Body		Regular Body	Monophase	Light Body	Super Light Body	Bite Registration
System								
Shade	Purple	Dark blue	Green	Transparent	Yellow	Orange	Dark Green	Light blue
Type	Normal/ Fast	Normal/ Fast	Fast	Fast	Normal	Normal/ Fast	Normal	Normal/ Fast
Standard package	2*400g	2*50ml	380ml	2*50ml	2*50ml	2*50ml	2*50ml	2*50ml
Kit package	2*400g putty+ 1*50ml light	2*50ml+ 6 mixers	-	2*50ml+ 6 mixers	2*50ml+ 6 mixers	2*50ml+ 12 mixers+ 12 oral tips	2*50ml+ 12 mixers+ 12 oral tips	2*50ml+ 6 mixers

Mixing time Normal Fast	0:30 min. 0:30 min.	-	-	-	-	-	-	-
Working time Normal Fast	1:30 min. 1:15 min.	2:00 min. 1:30 min.	2:00 min. 1:30 min.	- 1:30 min.	2:00 min. -	2:15 min. 1:30 min.	2:15 min. -	0:30 min. 0:12 min.
Time in mouth Normal Fast	3:00 min. 2:30 min.	3:30 min. 3:00 min.	3:30 min. 3:00 min.	- 3:00 min.	3:30 min. -	3:30 min. 2:30 min.	3:30 min. -	1:30 min. 0:45 min.
Linear dimensional change (24 h)	<0.2%	<0.2%	<0.2%	<0.2%	<0.2%	<0.2%	<0.2%	<0.2%
Recovery from deformation	>99.5%	>99.5%	>99.5%	>99.5%	>99.5%	>99.5%	>99.5%	-
Detail reproduction	20µm	20µm	20µm	20µm	20µm	20µm	20µm	-
Shore A hardness (24 h)	~67	~68	~68	~62	~60	~56	~56	~90
Shelf life	3 years	3 years	3 years	3 years	3 years	3 years	3 years	2years

*Data from HUGE Lab

